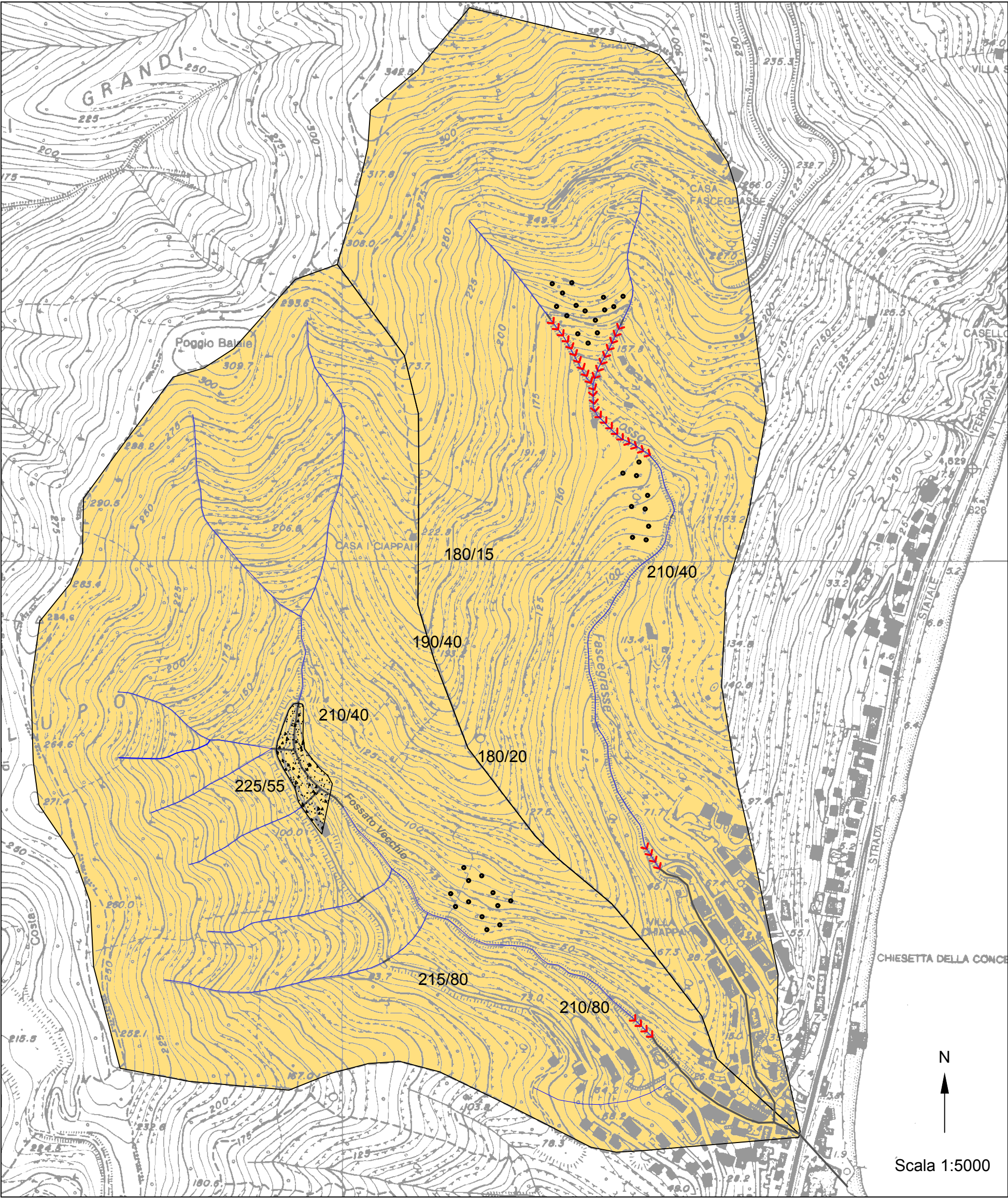










TAVOLA 2 - Carta idrogeomorfologica



LEGENDA

-  FORMAZIONE DI TESTICO (Eocene - Paleocene) alternanze ritmiche di strati di marne - marne calcaree con intercalazioni di strati pelitici
- 180/15      Giaciture dei piani di stratificazione principali
-  Coltri detritiche stimate con spessore sino a 3,00 metri
-  Aree terrazzate a fasce con coltri detritiche stimate generalmente con spessore sino a 1,00 metro
-  Rio in erosione / scarpate instabili
-  Materiale di discarica
-  Perimetro del bacino del Rio Fasce Grasse - Rio Fossato Vecchio
-  Reticolo idrografico
-  Tratto di alveo tombinato